

The background of the slide features a stylized city skyline at the bottom with various building shapes in shades of blue and white. The upper portion of the slide is a solid blue color with several stylized, light blue clouds scattered across it.

Affordable Housing as a Social Determinant of Health in Cincinnati

A closer look at the Connected Communities Project

Advocacy Project – LC 9

Affordable Housing

- Safe and affordable housing is a social determinant of health
 - Limit pollutant exposure, mold/dust/asbestos
 - Shelter from extreme temperatures/outside exposures
 - Physical security and consistency
 - Directly linked to several other SDOH:
 1. Stable employment
 2. Family planning
 3. Regular meals and proximity to healthy food(s)
 4. Financial independence

NEWS

Cincinnati homeless are dying on our streets

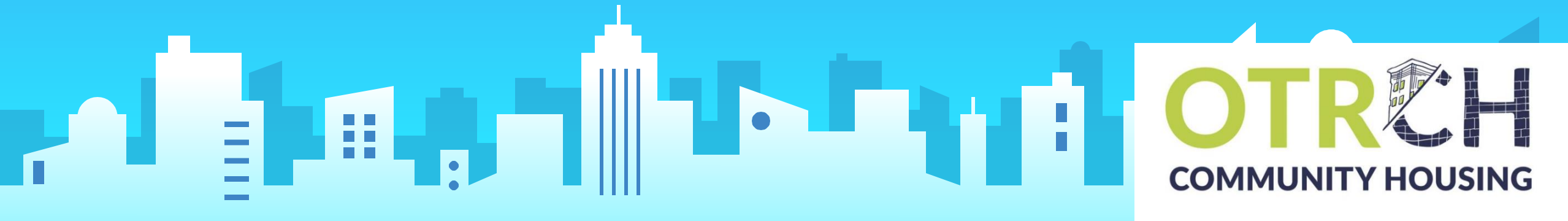
Sharon Coolidge, and Carrie Cochran Cincinnati

Dr. Bob Donovan has been providing medical care for Cincinnati's homeless people since 1988, first in a mobile van and now at a clinic in Over-the-Rhine.

The average life expectancy for a homeless person is 45 years old, he said.

Over-the-Rhine Community Housing

- Mission and Vision:
 - *develop and manage resident-centered affordable housing to build inclusive community and benefit low-income residents.*
 - *Quality stable housing for all in a socially, racially and economically inclusive community.*
- OTRCH and the Housing First principle
 - Housing as a basic human right
 - Alleviating the burden of housing insecurity/instability on vulnerable members of the community
- Facilities operated by OTRCH (*Jimmy Heath House*)
 - Stable housing for the downtrodden and less fortunate members of Cincinnati



"Connected Communities"

- Cincinnati Department of City Planning & Engagement (DCPE)
- Land use & zoning policy changes
- Policy goals
 - Stabilize rental pricing
 - Relaxed parking
 - Increasing row housing zoning
 - More permission for home daycares



Community Feedback

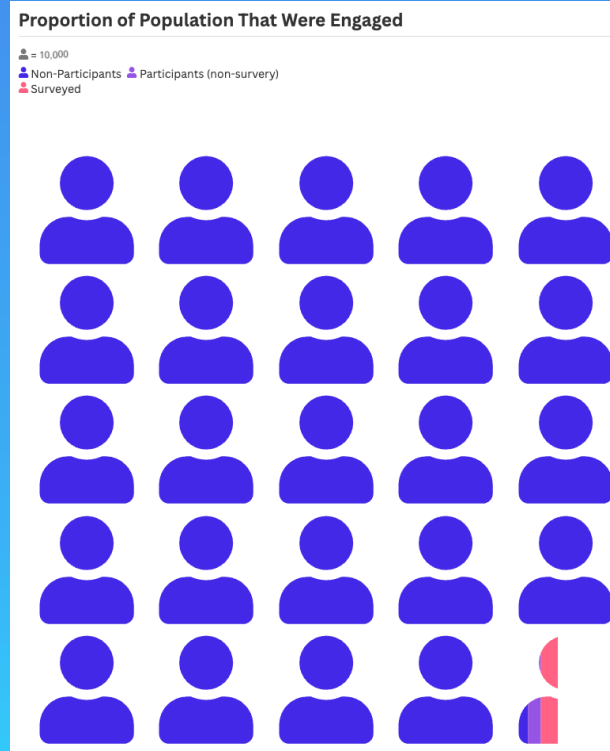
Top issues brought forth from survey respondents

1. Affordable Housing
2. Limited public transit
3. Parking

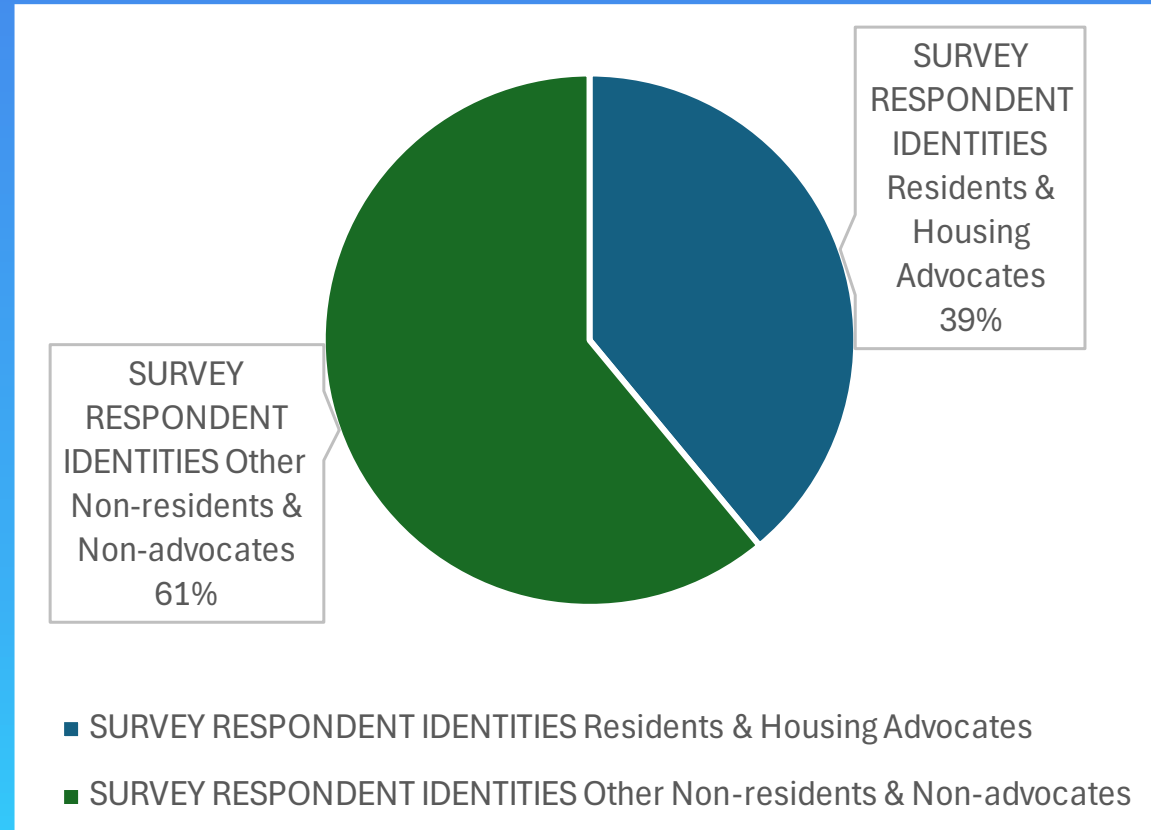
Several participants had concerns about many factors of the survey



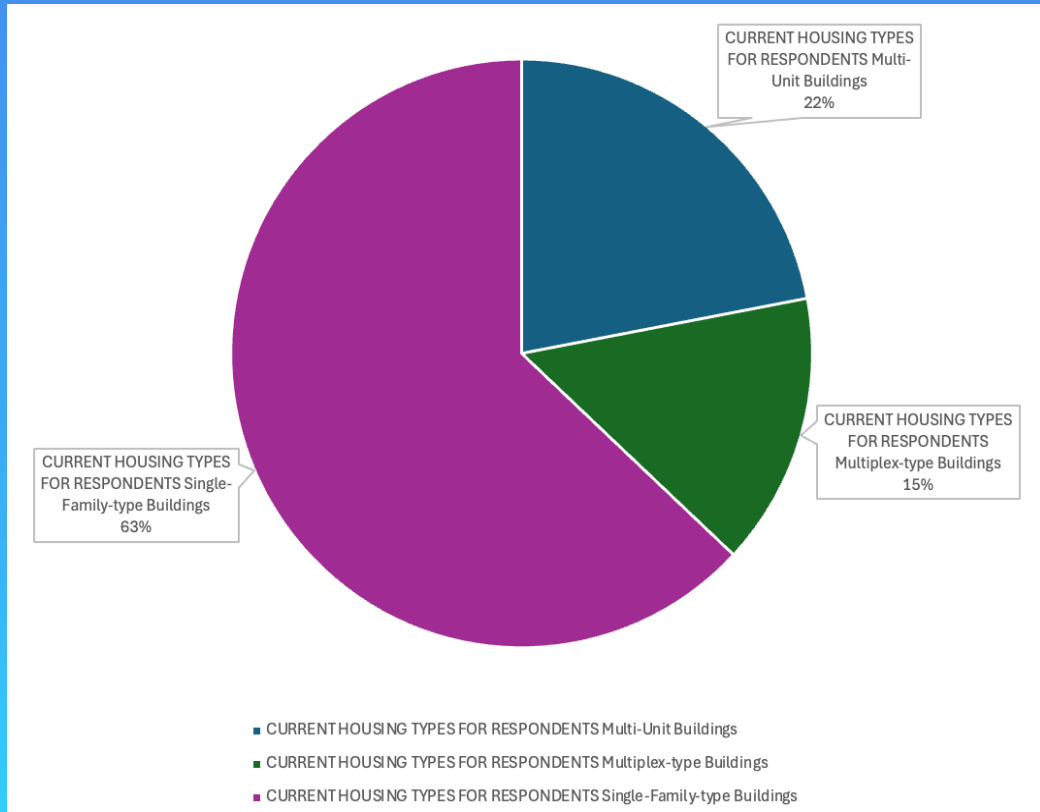
Engagement with the Connected Communities Survey



Survey Respondent Identities



Current Housing Types of Survey Respondents



<u>Current Respondent Housing</u>	<u>Percentage of Respondents</u>	<u>Percentage of 2020 Census</u>	<u>Difference</u>
Multi-Unit Buildings	22%	36%	-14%
Multiplex-type Buildings	15%	26%	-11%
Single-Family-type Buildings	62%	39%	+23%

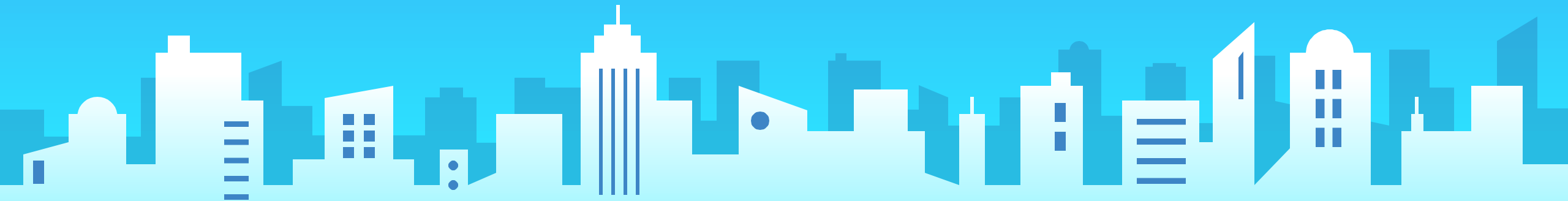
Policy Analysis

Strengths

- Considers community feedback
- Progressive perspective on urban density
- Intends to benefit vulnerable populations

Weaknesses

- Limited survey responses
- Limited responses from the extremely impoverished or unhoused Cincinnatians
- Fails to plan how to evaluate success



Our Recommendations



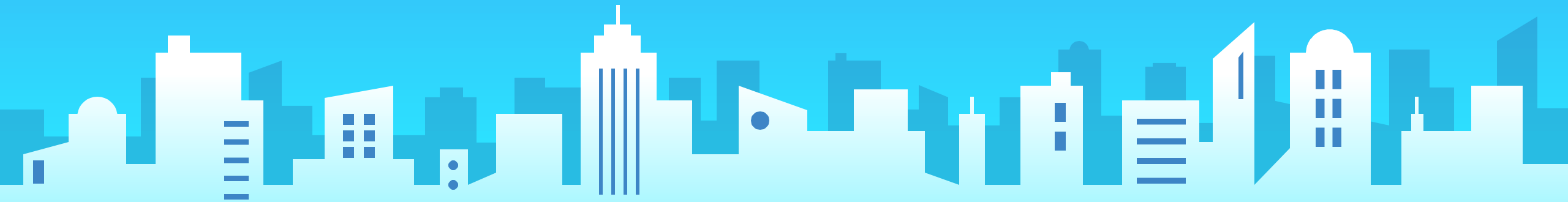
Additional feedback from residents of impacted communities and improve accessibility of response collection



Establish a way to evaluate the success of implementation



Enable continued feedback and evaluation



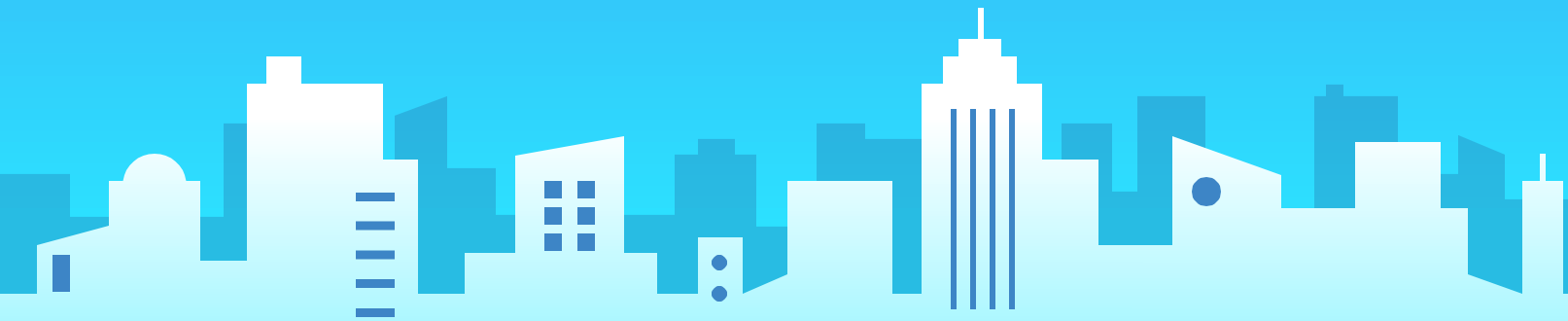
Proposed Advocacy Strategy

- Consider impacted populations' narrative experiences
- Actively seek engagement from those experiencing housing instability
- Influence subsequent proposed zoning changes to safeguard the region from developers who aim to perpetuate housing instability
- Advocate for those experiencing housing instability by seeking compromise with developers



Request for Support

- Supporting the Connected Communities Project
 - Urge project leaders to listen to those most impacted
 - Continue to follow-up with project implementation
 - Prioritize affordability of housing as project evolves
 - Alleviate the burden of housing instability faced by those in Cincinnati



References

- <https://otrch.org/about/history-mission/>
- <https://experience.arcgis.com/experience/341c80f53c764e0abd4199aeeb18b2de/page/Home/>
- <https://drive.google.com/file/d/1jLbuh9QMe2LoHsz62JwdA-uRnDGaU1GC/view>