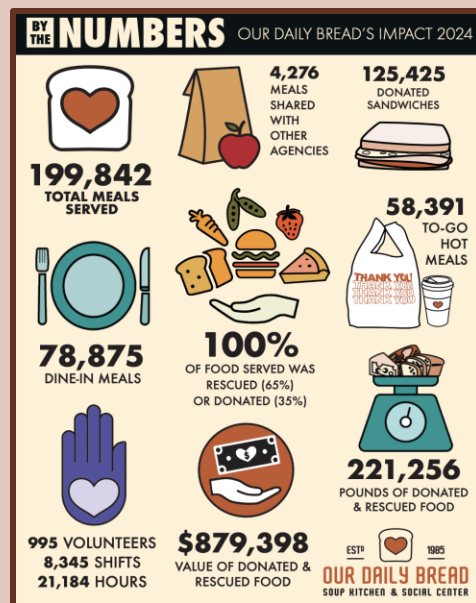


## OUR DAILY BREAD

- Our Daily Bread (ODB) is a **nonprofit soup kitchen** located in **Over the Rhine** in Cincinnati.
- The first meal, served to just 9 people, was a hearty turkey noodle soup dish. Today, **over 600 meals** are served **every weekday**, with dine-in or carry-out options.
- **100%** of the food for the meals is **rescued or donated**.
- ODB also serves as a **social center** by providing various services including social work, healthcare, employment assistance, addiction support services, and community activities.
- **70% of the patrons experience housing insecurity** and are thus without a reliable place to use the restroom.



## RESTROOM ACCESSIBILITY AND HEALTH

- A **decade long challenge** that many ODB patrons face is **locating an accessible restroom**. This leads many to **resort to public urination and defecation**.
- Restricted public restroom access for people experiencing homelessness creates additional challenges such as **maintaining personal hygiene** and **safety of their belongings**, which impacts their physical and mental health.
- Public urination and defecation creates **unsanitary and unsightly conditions** for both city residents and visitors. Additionally, there is an increased **financial burden** on the city to clean the sidewalks.
- A link between limited public restrooms and Shigella outbreaks was noted in 2022 as an increase of \$2.3 million in **hospitalization cost**. This is compared to the annual estimated cost of \$130-350K for initial installation of public restrooms and \$100-205K for maintenance.
- A benefit to installing more cost-effective public restrooms, like "Portland Loo", is the included blue light, which has been shown to **reduce drug use**.

## PROJECT METHODS & RESULTS

- **Goal:** Examine bathroom habits and attitudes toward public restroom accessibility among ODB patrons. Compile the data into a map of local public restrooms and their hours of availability. Use project findings to **demonstrate the dilemma of restricted public restroom access for the homeless population**.
- **Project methods:** A 14-question survey (with multiple-choice and free-response questions) was created to inquire about difficulties locating restrooms, frequency of bathroom usage, and which public restrooms people utilize throughout the day. **52 patrons** were interviewed in February 2025.

### Key findings:

- Have difficulty finding a restroom



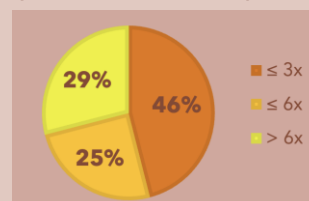
- Admitted to using the restroom outside in open areas



- Shunned by businesses for using their restrooms

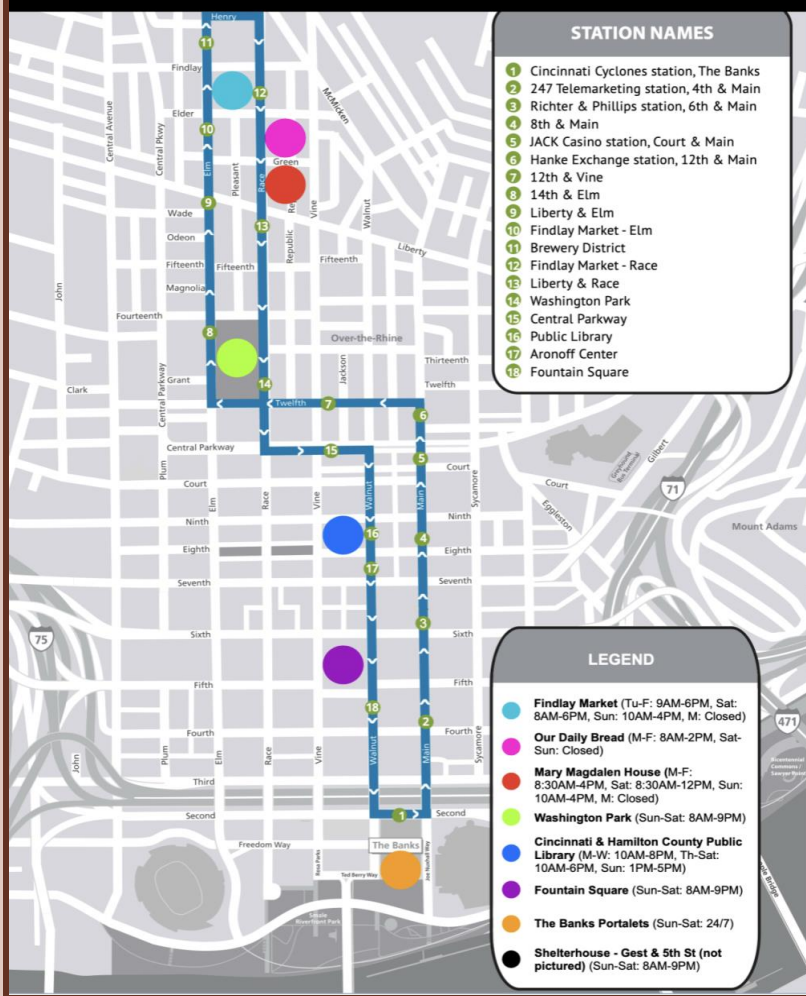


- Frequency of restroom use per day





## PUBLIC RESTROOMS



## WHAT WE DID

- Based on survey responses, we created a **map of restrooms available for public use**, along with their hours of availability.
- The map outlines the route of the **Cincinnati Connector**, a fare-free streetcar that runs through OTR, Downtown, and The Banks.
  - Hours of operation:
    - M-F: 7:30 AM – 11:30 PM
    - Sat: 8:30 AM – 11:30 PM
    - Sun: 9:30 AM – 9:30 PM

## CURRENT POLICY

- Current city policy includes provisions that require equitable access to restrooms that currently exist but **does not guarantee geographic availability or extended hours**
- Previous efforts to expand restroom access **stalled due to cost**

## ADVOCACY STRATEGY

- Present project findings to City of Cincinnati officials to raise awareness about the need for increased public restroom access in OTR
- How can public restroom access be addressed?
  - Increase the hours of operation** and/or number of restroom facilities
  - Portable restrooms** may be the quickest and easiest solution
    - Less susceptible to misuse
  - Implement a **public restroom maintenance strategy**
    - Event management strategies in Washington Park and Fountain Square have been suitable examples
    - Ensure that current public restrooms are regularly restocked with supplies
- Place more accessible **restrooms that accommodate those with disabilities**
- Address comorbidities** such as housing insecurity and drug abuse
- An accessible city is a cleaner city, benefiting both those facing housing insecurity, and all those who live and thrive here**